

# ROAD INDEX

I	RADCLIFFE RD.	B1,F1
J	BASCOMBE RD.	F2,F4
	BRAKEMAN RD.	D1,D4
	BROWN RD.	B2,B4
K	KILE RD.	G2,G6
L	CHARDON WINDSOR RD.	A6,D6
	CLARIDON TROY RD.	D6,E6
	CUTTS RD.	B4,B5
M	TAYLORWELLS RD.	C6
N	VENUS RD.	E3,E4
O	WILLIAMS RD.	E1,E3
	WOODIN RD.	A4,D4
P	OLD STATE RD.	B1,E6
Q	GRANT ST.	A5
	PEARL RD.	A3,C2

① HAMB DEN ELEMENTARY SCHOOL  
 ② HAMB DEN CONGREGATIONAL CH.  
 ③ CHRISTIAN & MISSIONARY ALLIANCE CH.  
 ④ HAMB DEN CEMETERY  
 ⑤ HAMB DEN VOL. FIRE DEPT.  
 ⑥ HAMB DEN TOWN HALL.

## HAMB DEN TOWNSHIP

SCALE - 1" = 2000'  
 O. J. ROBINSON  
 GEAGA COUNTY ENGINEER

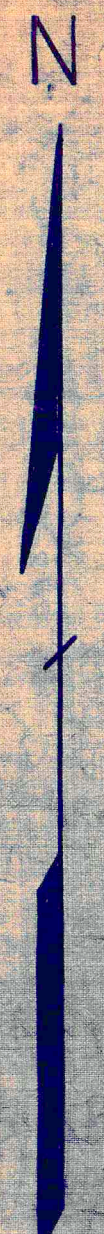
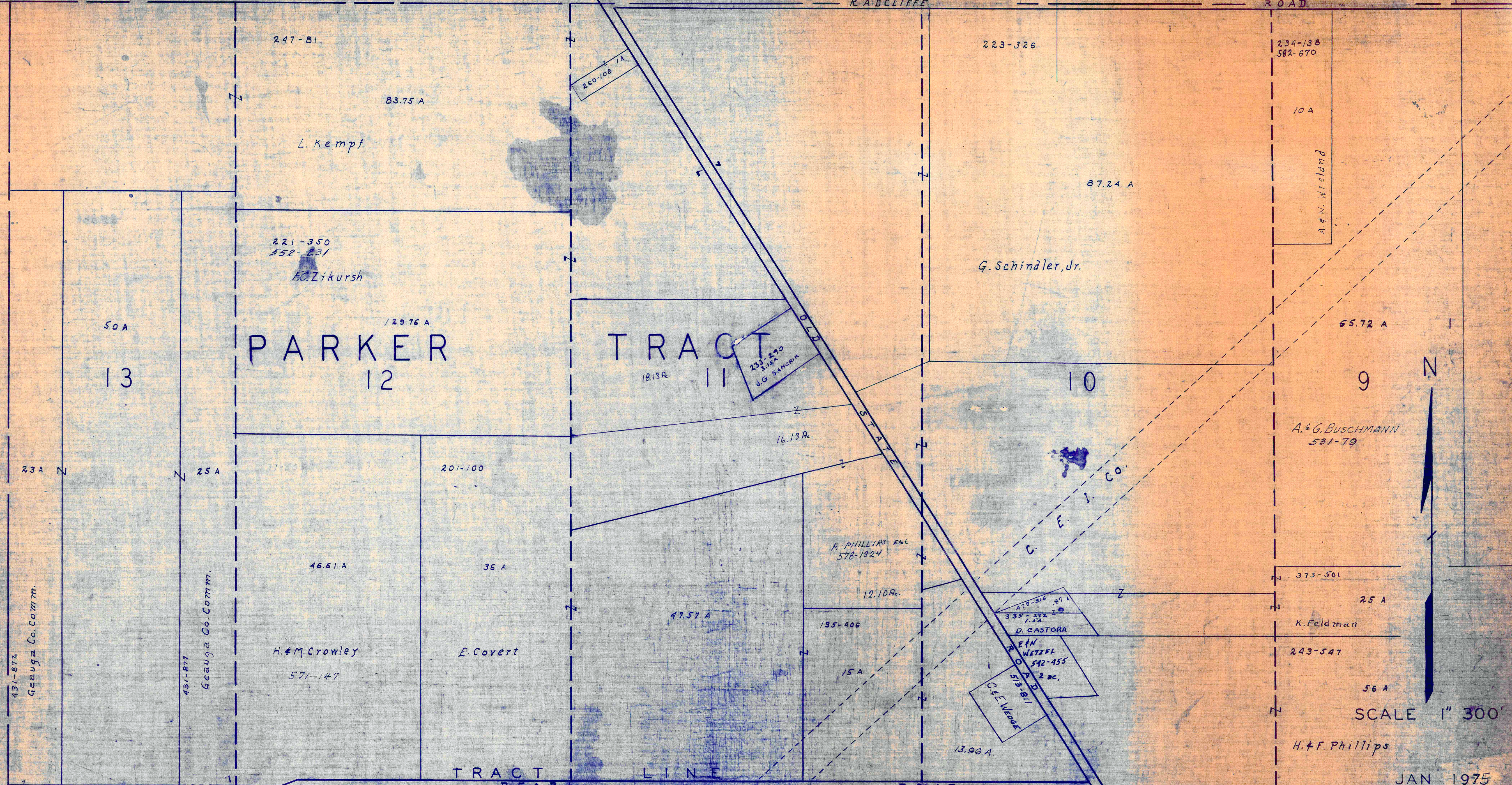
--- UNPAVED ROAD  
 --- PAVED ROAD  
 --- COUNTY LINE

--- RAILROAD  
 --- TOWNSHIP LINE  
 --- CORPORATION LINE

L A K E C O U N T Y

P  
W  
T  
N  
O  
D  
O  
N  
A  
R  
D  
O  
N  
C  
H  
A

R. ADCLIFFE ROAD



SCALE 1" = 300'

JAN 1975

A	B	C	D
E	F	G	H
I	J	K	L
M	N	O	P

HAMB DEN TWP

PEARL LINE ROAD

STOWN ROAD

Easement

431-874  
Geauga Co. Comm.

431-877  
Geauga Co. Comm.

430-567  
F.H. Collins  
460-914  
439-282  
W.L. Metzger

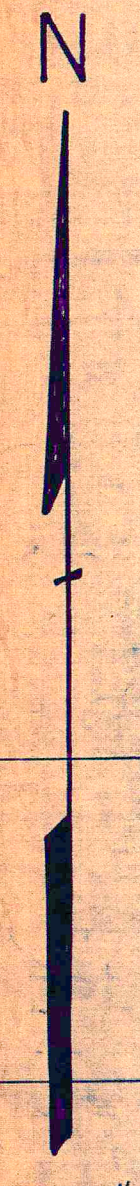
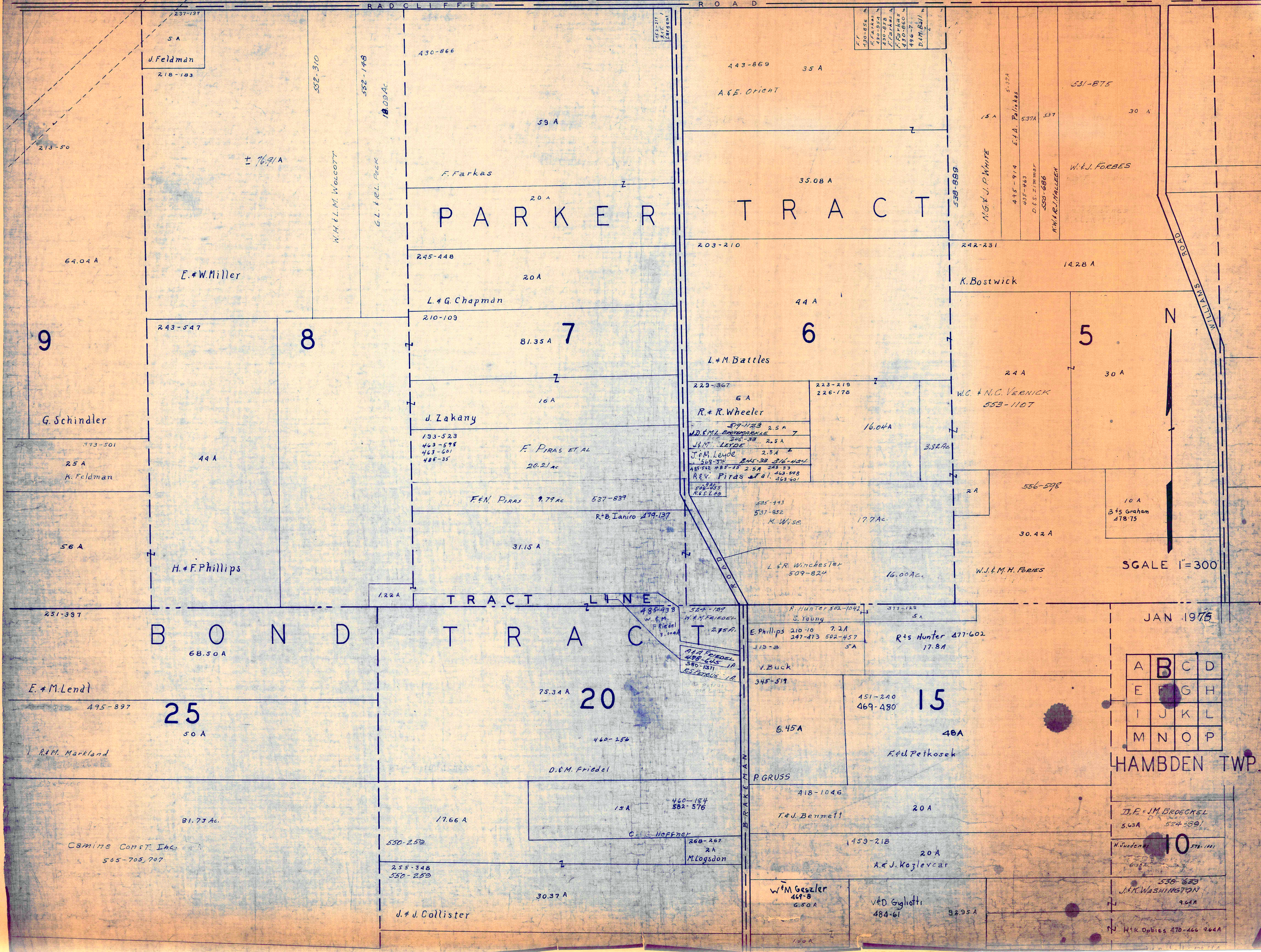
390-513  
Remondipm

516-810  
2.14 A  
W.S. MALYS

516-1026  
1.5 A  
J.L. BENNETT

516-1026  
1.5 A  
J.L. BENNETT

L A K E C O U N T Y



SCALE 1"=300'

JAN 1975

A	B	C	D
E	F	G	H
I	J	K	L
M	N	O	P

HAMBDEN TWP.

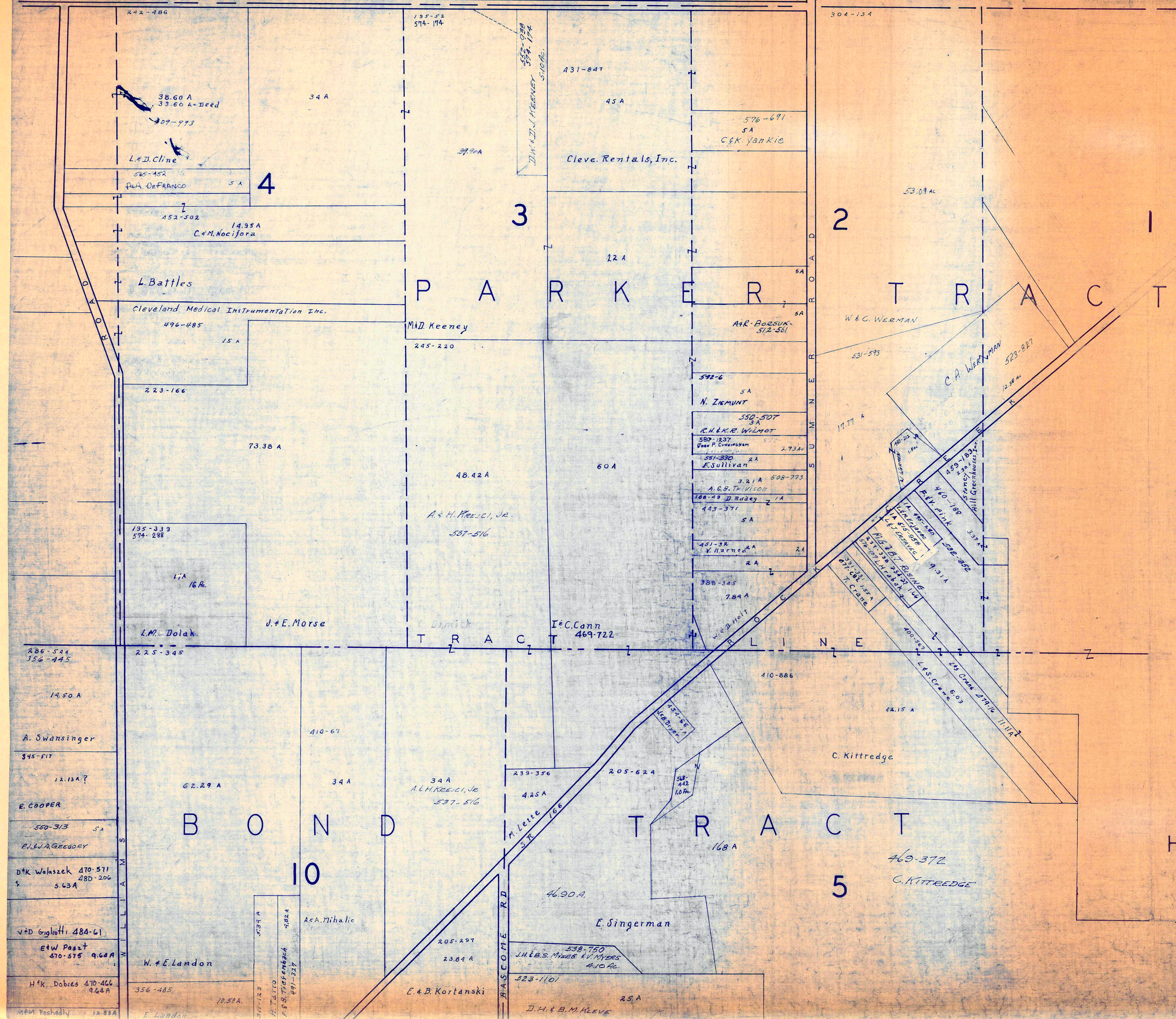
J. P. & J. M. BROECKEL  
5.63A 524-599

W. J. & M. H. FORBES  
10 576-111

J. & K. WASHINGTON  
9.61A

W. & R. OPIES 470-466 9.64A

L A K E C O U N T Y



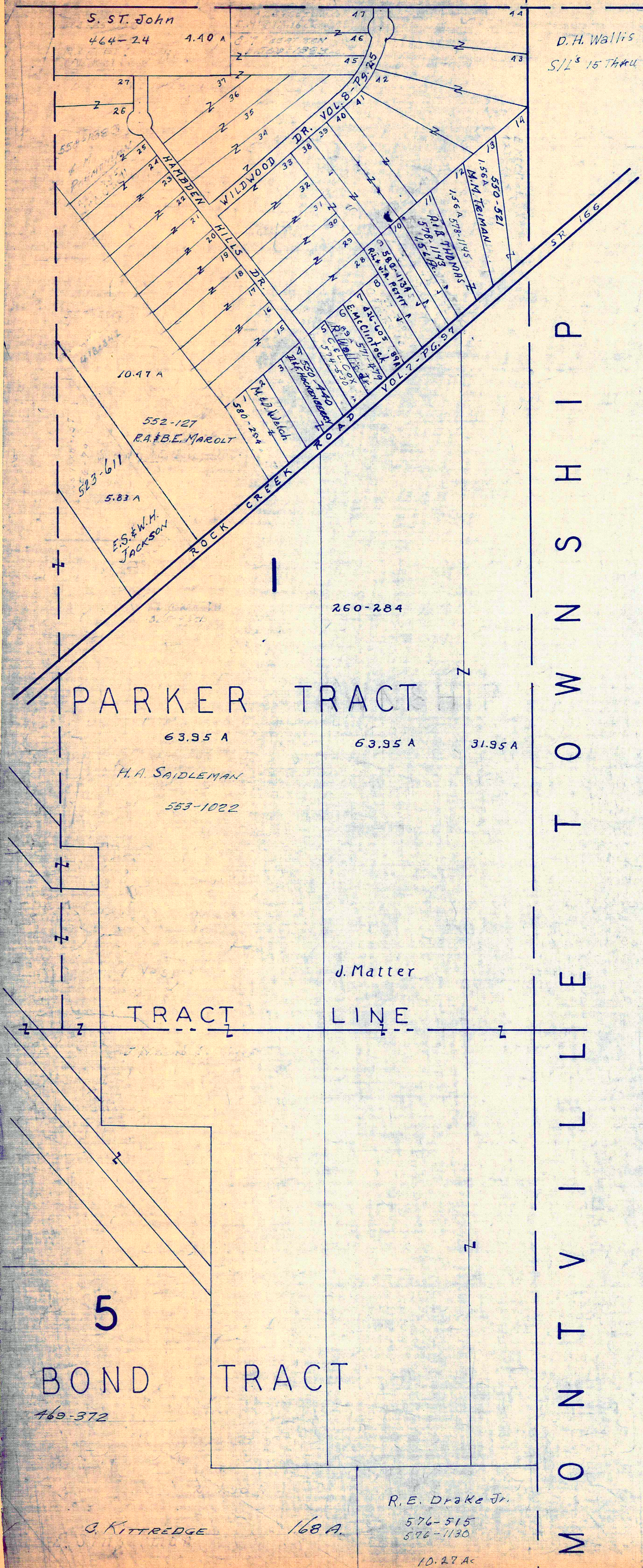
SCALE 1" = 300'  
JAN 1975

A	B	C	D
E	F	G	H
I	J	K	L
M	N	O	P

HAMB DEN TWP.

LAKE COUNTY

THOMPSON TWP.



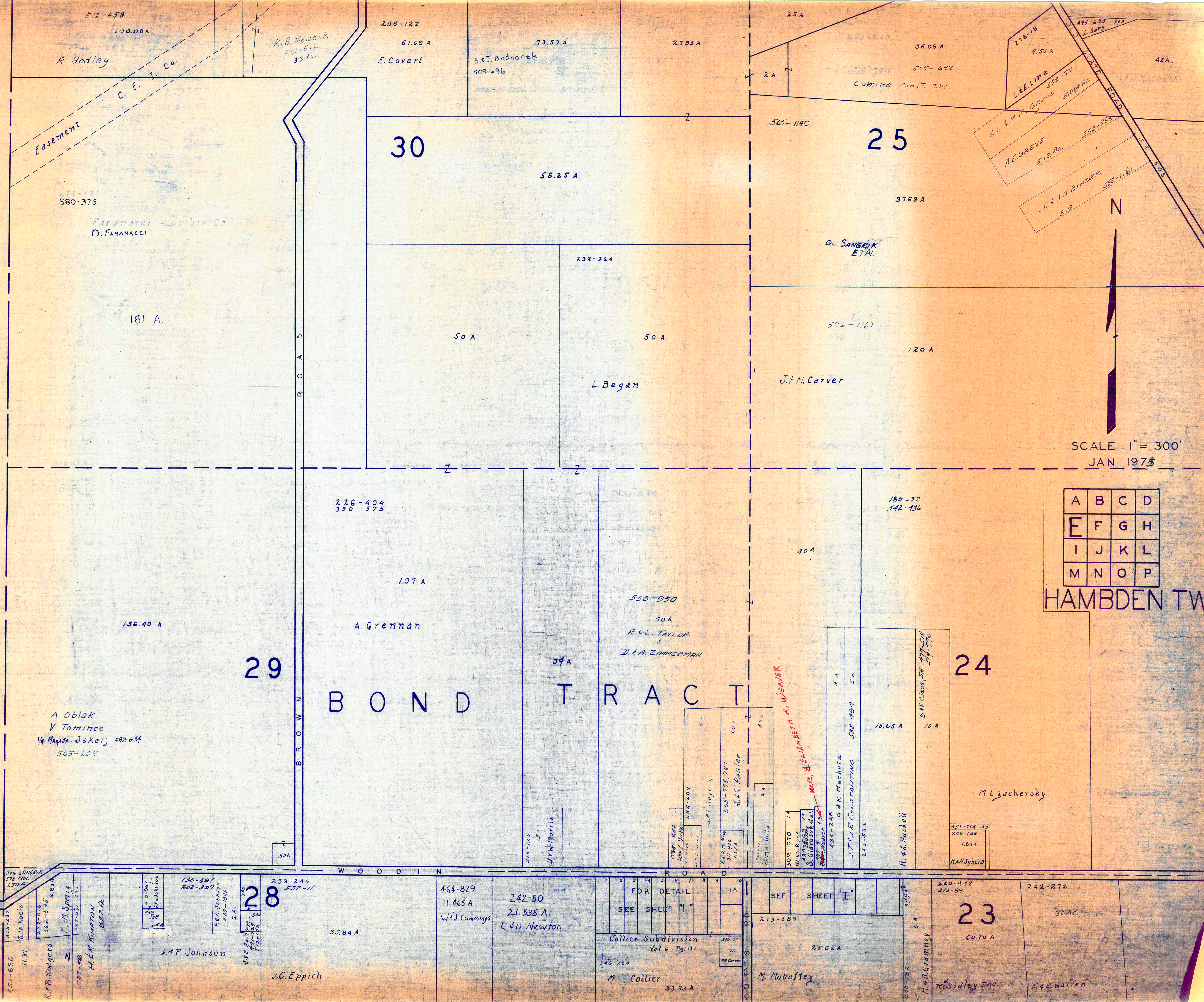
SCALE 1" = 300'

JAN 1973

A	B	C	D
E	F	G	H
I	J	K	L
M	N	O	P

HAMBDEN TWP.

C H A R D O N T O W N S H I P



30

25

29

24

28

23

BOND TRACT

HAMB DEN TW

SCALE 1" = 300'  
JAN 1975

A	B	C	D
E	F	G	H
I	J	K	L
M	N	O	P

512-458  
100.00A  
R. Bodley  
C. E. I. Co.  
K. B. Melocik  
501-512  
33 Ac.206-122  
61.69 A  
E. Covert  
73.57 A  
S. & J. Bednarek  
509-696

72-497  
580-376  
Faranacci Lumber Co  
D. FARANACCI

161 A

27.95 A  
56.25 A  
232-324

50 A

50 A

L. Began

25 A  
36.06 A  
505-627  
Camino Const. Inc.  
278-18  
4.51 A  
L.E. LIME  
R.L. & M.M. GREVE  
552-77  
504 AC  
A.E. GREVE  
512 AC  
552-863  
J.C. & J.A. BENDER  
519  
552-1161

G. SANGRIK  
ETAL

576-1160

J. & M. Carver

97.69 A

120 A

226-404  
390-575

107 A

A. Grennan

136.40 A

A. Oblak  
V. Tominec  
1/4 Mapisa-Jakelj 582-634  
505-605

550-950  
50 A  
R. & L. TAYLOR  
&  
D. & A. ZIMMSEMAN

180-32  
342-436

30 A

18.65 A

10 A

M. Czachersky

239-244  
552-11

35.84 A

J.C. Eppich

464-829  
11.465 A  
W. S. Cummings

242-50  
21.535 A  
E. & D. Newton

FOR DETAIL  
SEE SHEET "I"  
Collier Subdivision  
Vol. 6-79, 111  
340-284  
M. Collier  
33.53 A

SEE SHEET "I"  
213-589  
25.62 A  
M. Mahaffey

260-447  
373-89  
R. D. Grammey  
R. Sidley Inc.

242-272  
30 AC.  
E. & D. Warren

F. & E. Covert  
315-497  
153-696  
11.37  
D. A. Kocio  
R. B. Rodgers  
562-945  
2.63  
M. M. Sperry  
537-48  
H. M. Hampton  
B. E. R.

130-397  
203-324  
2.46  
A. P. Johnson

110-962  
1.54  
J. & E. Borwick  
582-1066  
2.46  
J. C. Eppich

319-125  
3.1  
J. W. Morris

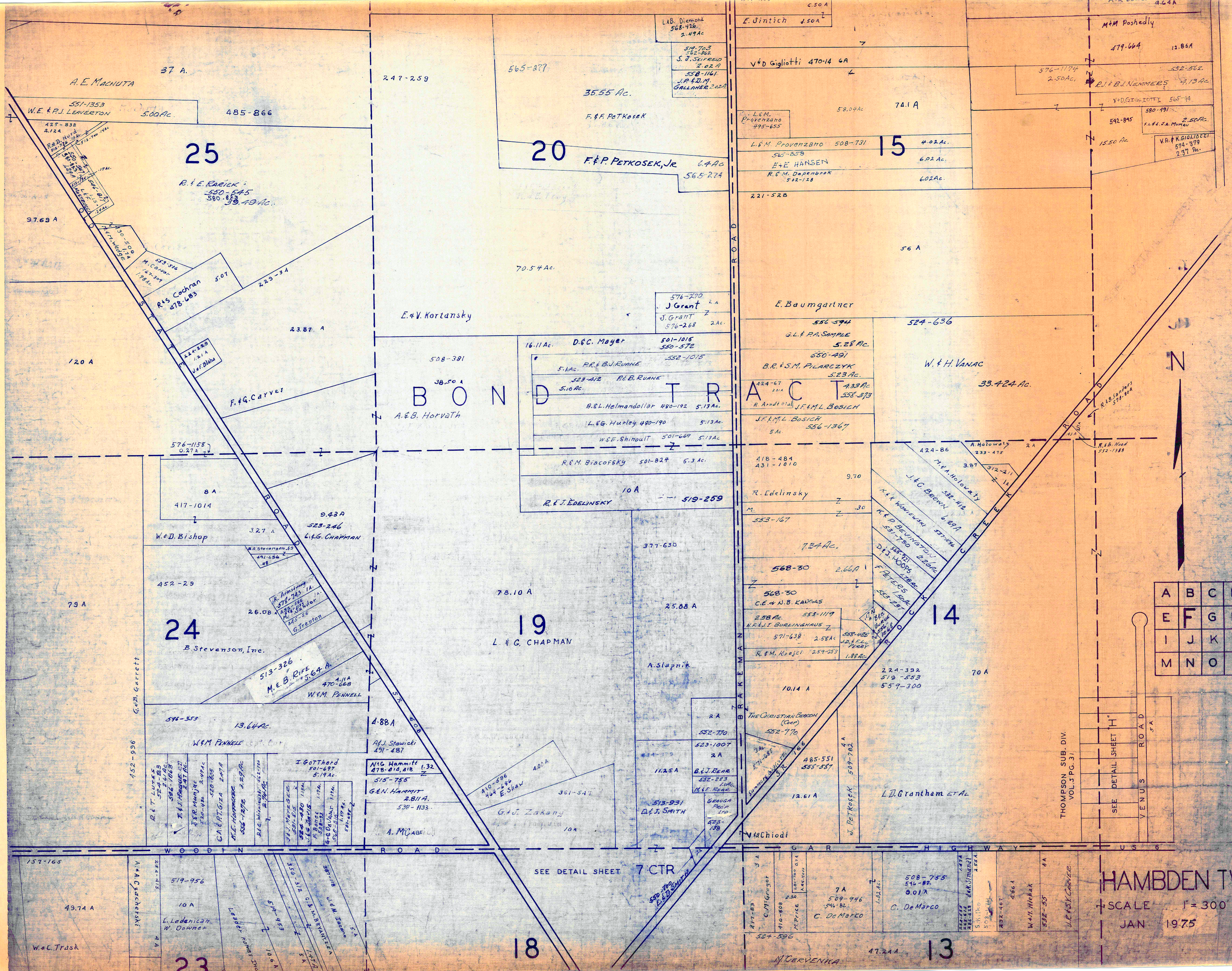
578-802  
1051-1014  
25A-207  
U. L. Sejeik  
505-778, 780  
8-494  
1254  
J. & S. P. H. Co.  
3.0 A  
3.9 A  
3.9 A  
4.4  
G. Machuta

308-1070  
W. L. Reese  
578-802  
J. & S. P. H. Co.  
3.0 A  
3.9 A  
3.9 A  
4.4  
G. Machuta  
W.C. & ELIZABETH A. WEAVER

434-246  
G. R. Machuta  
502-494  
5 A  
6 A

451-714  
206-786  
1.89 A  
R. A. Maskell  
Re. N. Sykora

8.65 A  
10 A  
B. F. Claus, Sr.  
479-518  
514-716



# B O N D T R A C T

A	B	C	D
E	F	G	H
I	J	K	L
M	N	O	P

**HAMB DEN TWP**  
 SCALE 1" = 300'  
 JAN 1975

SEE DETAIL SHEET 7 CTR

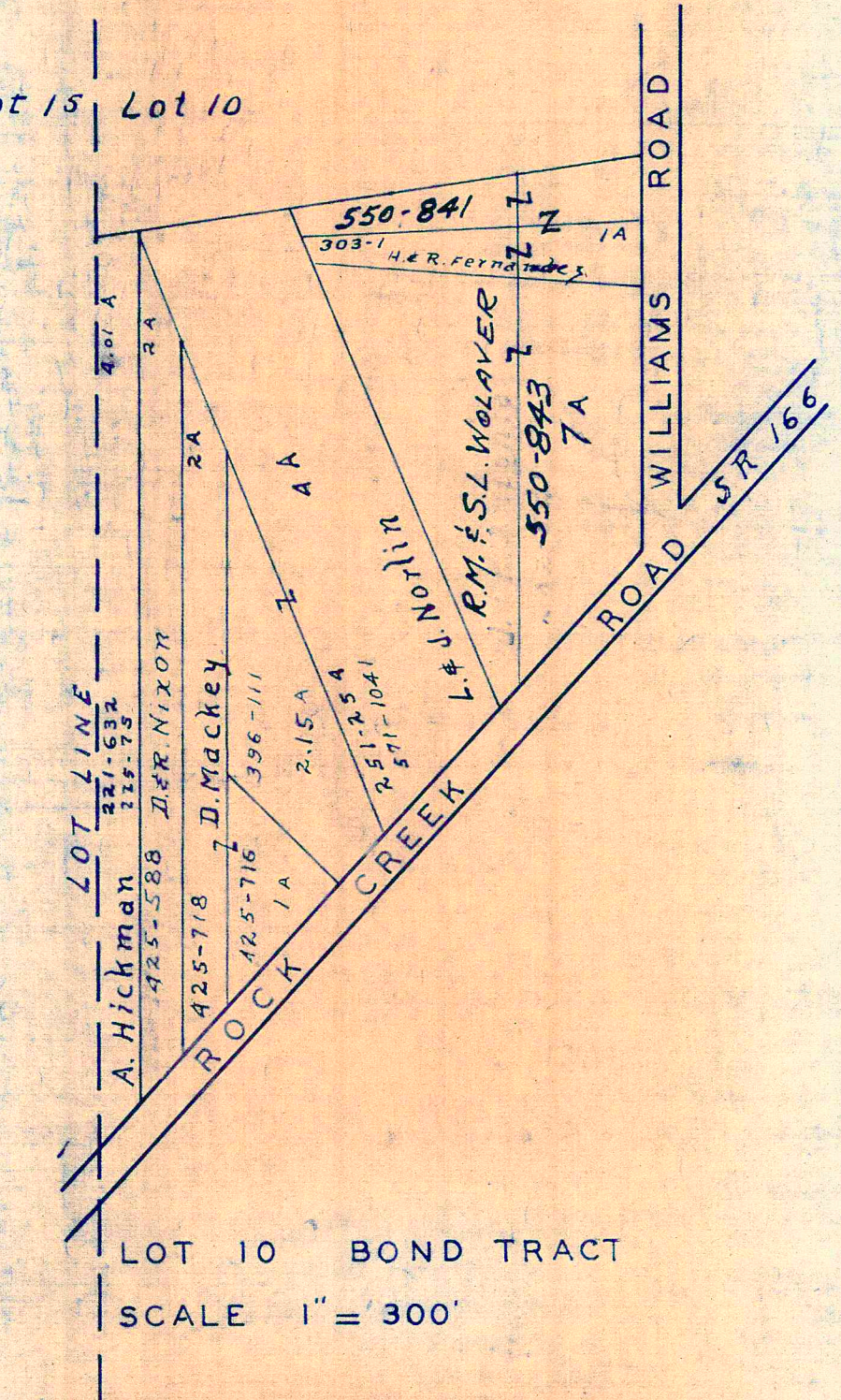
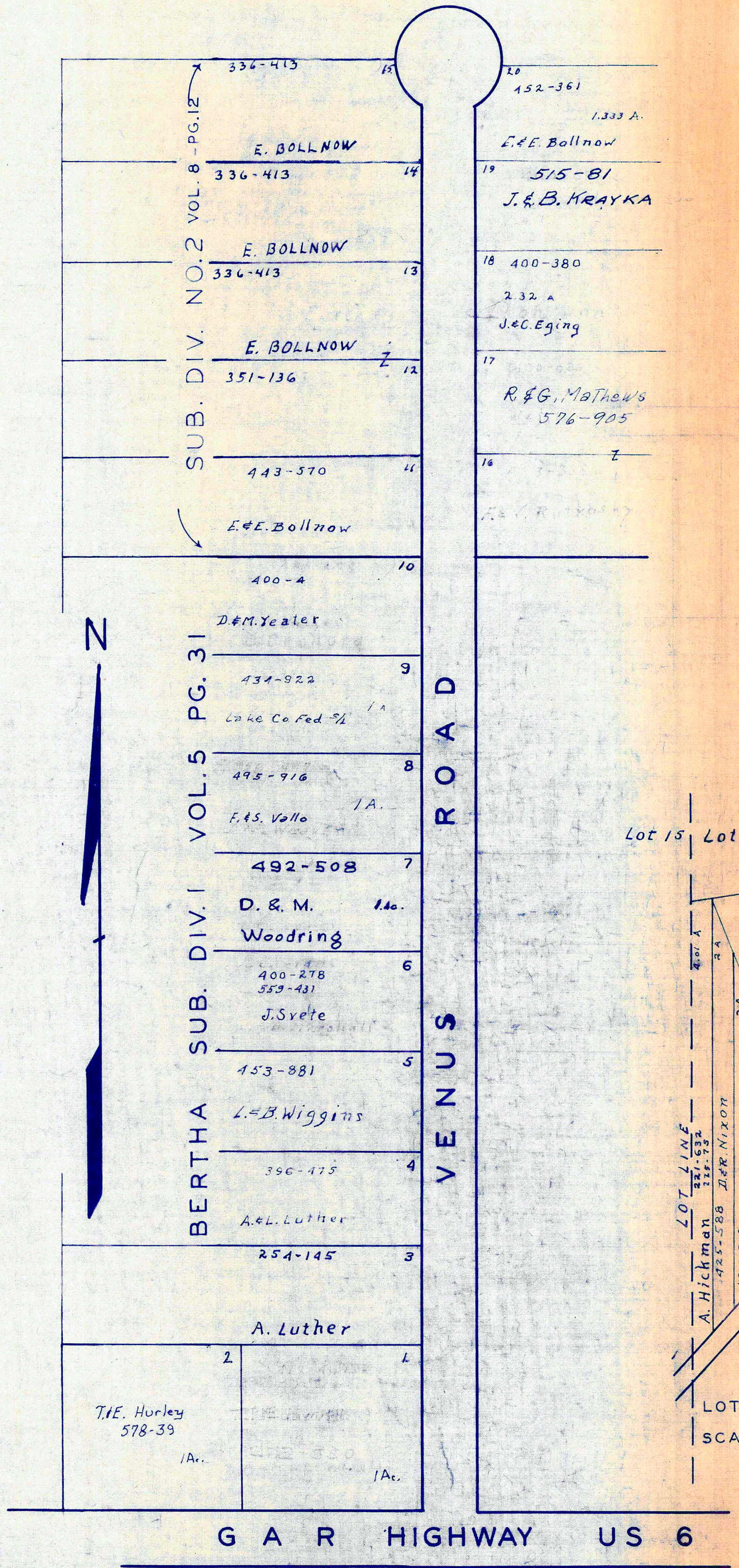
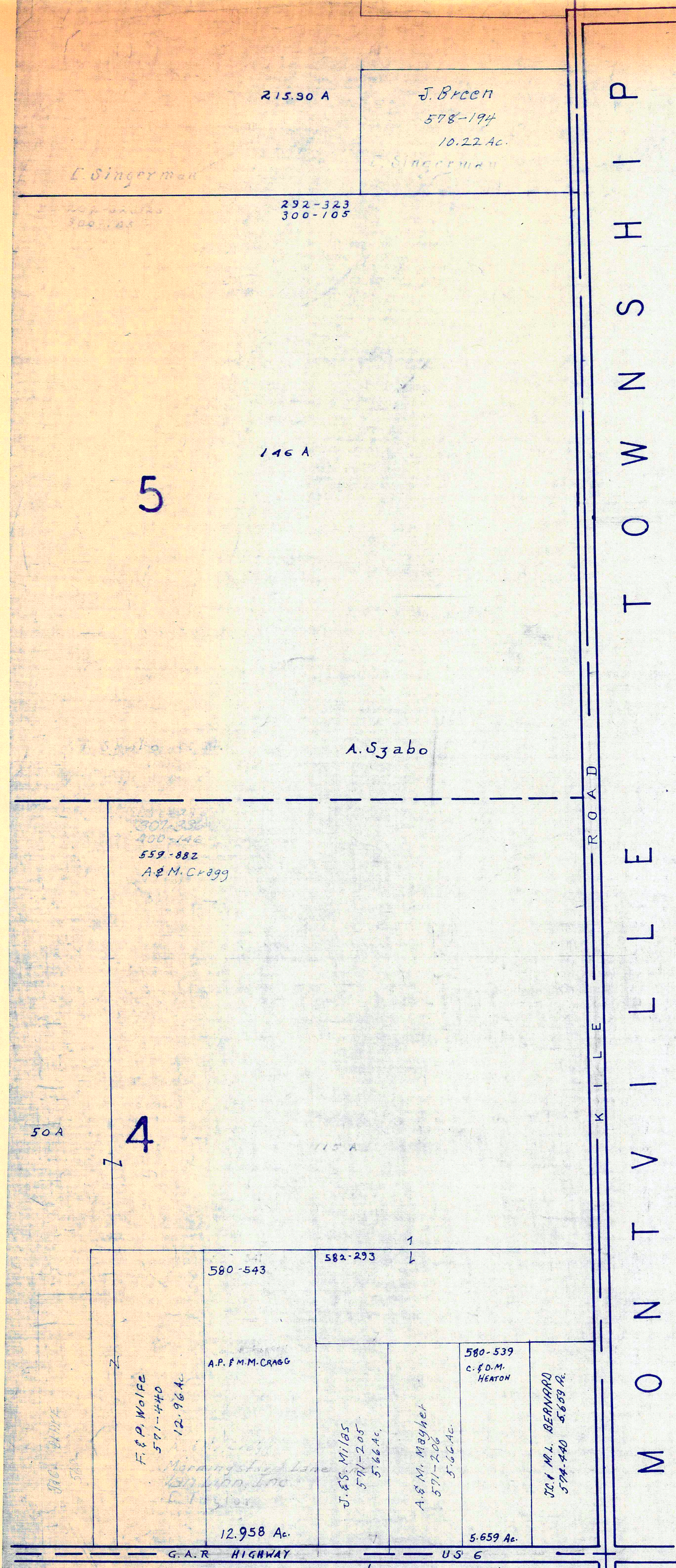
THOMPSON SUB. DIV.  
 VOL. 3 PG. 31

VENUS ROAD  
 SEE DETAIL SHEET "H"



37 A. A.E. MACHUTA  
 485-866 W.E. & P.J. LEAVERTON  
 500 AC.  
 25 R.E. RARICK  
 530, 545, 580, 583, 49 AC.  
 20 F.F. PETKOSEK, JR.  
 6.4 AC.  
 565-274  
 15 L.M. PROVENZANO  
 508-731  
 4.02 AC.  
 E.E. HANSEN  
 6.02 AC.  
 R.G.M. DAMENBROEK  
 542-128  
 6.02 AC.  
 20 F.F. PETKOSEK, JR.  
 6.4 AC.  
 565-274  
 15 L.M. PROVENZANO  
 508-731  
 4.02 AC.  
 E.E. HANSEN  
 6.02 AC.  
 R.G.M. DAMENBROEK  
 542-128  
 6.02 AC.  
 24 B. STEVENSON, INC.  
 452-29  
 19 L. & G. CHAPMAN  
 78.10 A  
 14 L.D. GRANTHAM ET AL.  
 70 A  
 18 M. CERVENKA  
 47.24 A  
 13 C. DeMARCO  
 508-755  
 516-82  
 9.01 A





N

SCALE 1" = 300'

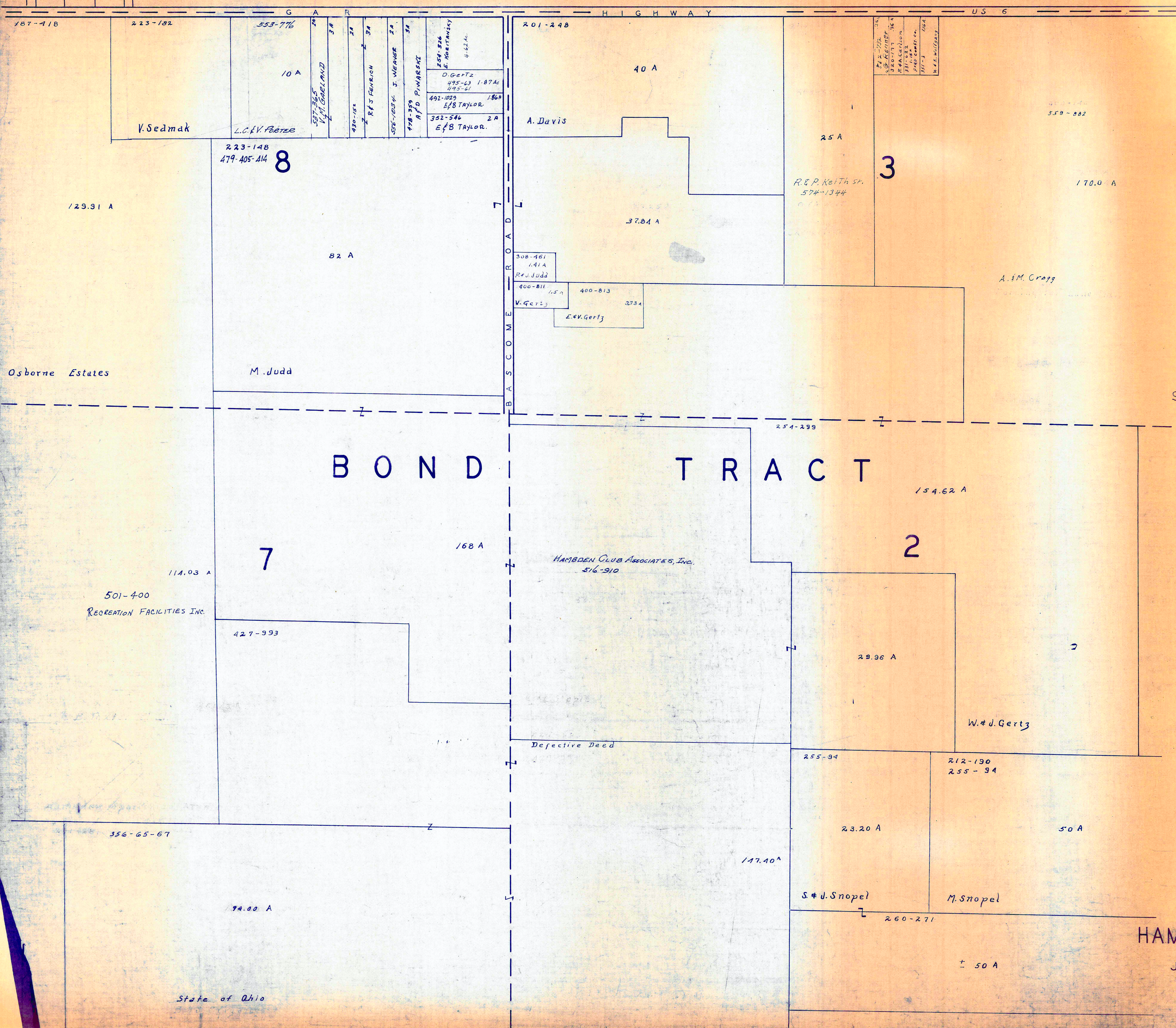
JAN 1 1975

A	B	C	D
E	F	G	H
I	J	K	L
M	N	O	P

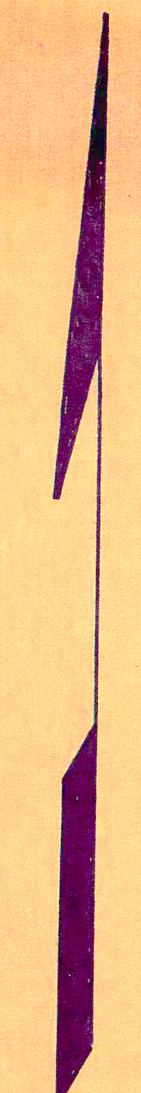
HAMB DEN TWP.







N



SCALE 1" = 300'

BOND TRACT

A	B	C	D
E	F	G	H
I	J	K	L
M	N	O	P

HAMB DEN TWP.

JAN 1975

State of Ohio

G A R HIGHWAY US 6

559-882

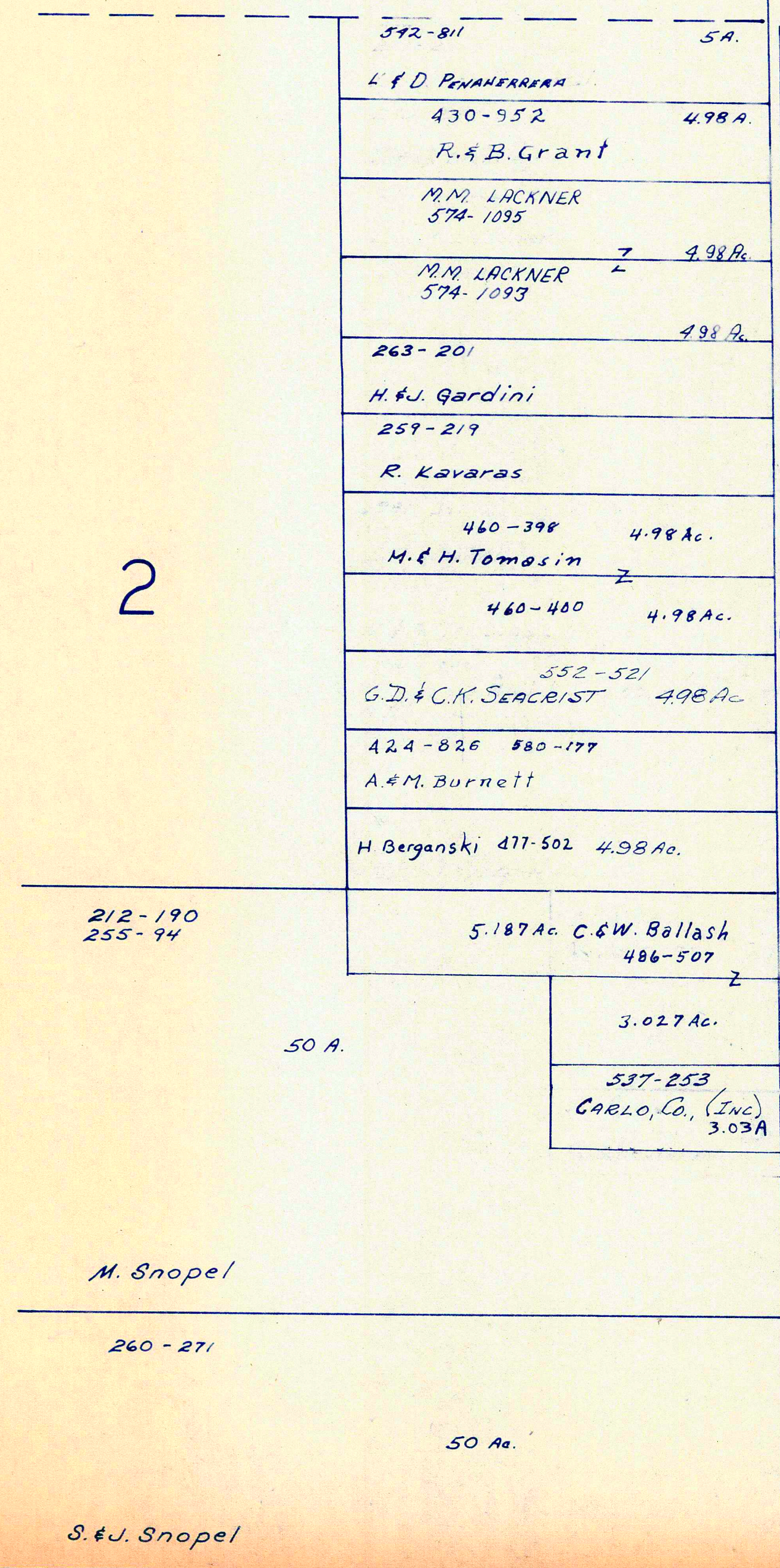
3

170.00 A.

A. & M. Cragg

BOND TRACT

R O A D T O W N S H I P M O N T V I L L E



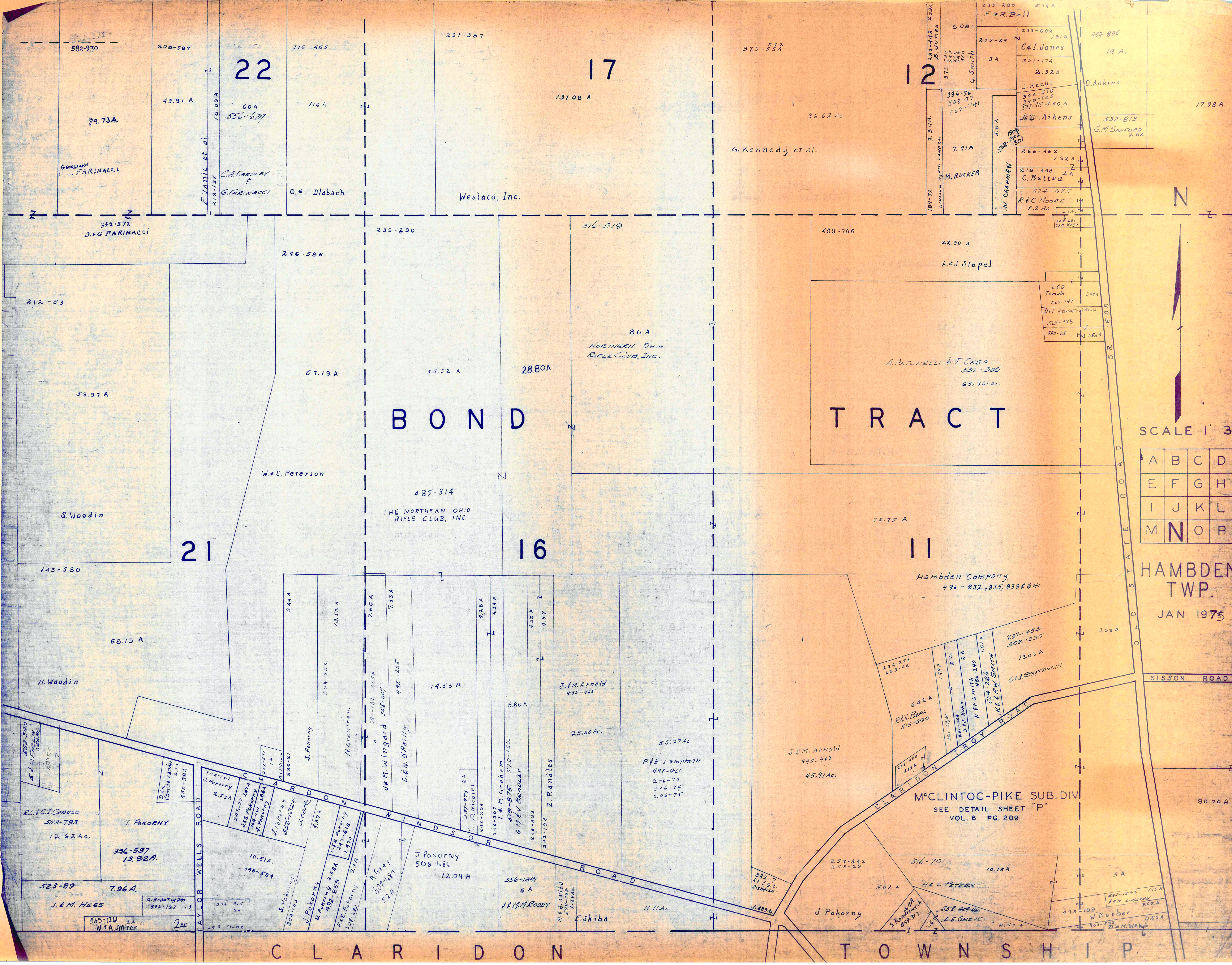
SCALE 1" = 300'

A	B	C	D
E	F	G	H
I	J	K	L
M	N	O	P

HAMB DEN TWP.

JAN. 1975





22

17

12

21

16

11

BOND

TRACT

SCALE 1" = 300'

A	B	C	D
E	F	G	H
I	J	K	L
M	N	O	P

HAMB DEN TWP.  
JAN 1975

CLARIDON TOWNSHIP

GEORGIANN FARINACCI

D. & G. FARINACCI

S. Woodin

H. Woodin

R.L. & G.I. CAUSO

J. & M. HESS

49.91 A

59.97 A

143-580

68.19 A

334-537  
13.92 A

523-89  
7.96 A

565-124  
2 A

60 A

W. C. Peterson

21

J. POKORNY

336-537  
13.92 A

523-89  
7.96 A

565-124  
2 A

116 A

67.19 A

W. C. Peterson

21

J. POKORNY

336-537  
13.92 A

523-89  
7.96 A

565-124  
2 A

116 A

67.19 A

W. C. Peterson

21

J. POKORNY

336-537  
13.92 A

523-89  
7.96 A

565-124  
2 A

116 A

67.19 A

W. C. Peterson

21

J. POKORNY

336-537  
13.92 A

523-89  
7.96 A

565-124  
2 A

116 A

67.19 A

W. C. Peterson

21

J. POKORNY

336-537  
13.92 A

523-89  
7.96 A

565-124  
2 A

116 A

67.19 A

W. C. Peterson

21

J. POKORNY

336-537  
13.92 A

523-89  
7.96 A

565-124  
2 A

116 A

67.19 A

W. C. Peterson

21

J. POKORNY

336-537  
13.92 A

523-89  
7.96 A

565-124  
2 A

116 A

67.19 A

W. C. Peterson

21

J. POKORNY

336-537  
13.92 A

523-89  
7.96 A

565-124  
2 A

116 A

67.19 A

W. C. Peterson

21

J. POKORNY

336-537  
13.92 A

523-89  
7.96 A

565-124  
2 A

116 A

67.19 A

W. C. Peterson

21

J. POKORNY

336-537  
13.92 A

523-89  
7.96 A

565-124  
2 A

116 A

67.19 A

W. C. Peterson

21

J. POKORNY

336-537  
13.92 A

523-89  
7.96 A

565-124  
2 A

116 A

67.19 A

W. C. Peterson

21

J. POKORNY

336-537  
13.92 A

523-89  
7.96 A

565-124  
2 A

116 A

67.19 A

W. C. Peterson

21

J. POKORNY

336-537  
13.92 A

523-89  
7.96 A

565-124  
2 A

116 A

67.19 A

W. C. Peterson

21

J. POKORNY

336-537  
13.92 A

523-89  
7.96 A

565-124  
2 A

N

SCALE 1" = 300'

A	B	C	D
E	F	G	H
I	J	K	L
M	N	O	P

HAMB DEN TWP.  
JAN 1975

CLARIDON TOWNSHIP

GEORGIANN FARINACCI

D. & G. FARINACCI

S. Woodin

H. Woodin

R.L. & G.I. CAUSO

J. & M. HESS

49.91 A

59.97 A

143-580

68.19 A

334-537  
13.92 A

523-89  
7.96 A

565-124  
2 A

60 A

W. C. Peterson

21

J. POKORNY

336-537  
13.92 A

523-89  
7.96 A

565-124  
2 A

116 A

67.19 A

W. C. Peterson

21

J. POKORNY

336-537  
13.92 A

523-89  
7.96 A

565-124  
2 A

116 A

67.19 A

W. C. Peterson

21

J. POKORNY

336-537  
13.92 A

523-89  
7.96 A

565-124  
2 A

116 A

67.19 A

W. C. Peterson

21

J. POKORNY

336-537  
13.92 A

523-89  
7.96 A

565-124  
2 A

116 A

67.19 A

W. C. Peterson

21

J. POKORNY

336-537  
13.92 A

523-89  
7.96 A

565-124  
2 A

116 A

67.19 A

W. C. Peterson

21

J. POKORNY

336-537  
13.92 A

523-89  
7.96 A

565-124  
2 A

116 A

67.19 A

W. C. Peterson

21

J. POKORNY

336-537  
13.92 A

523-89  
7.96 A

565-124  
2 A

116 A

67.19 A

W. C. Peterson

21

J. POKORNY

336-537  
13.92 A

523-89  
7.96 A

565-124  
2 A

116 A

67.19 A

W. C. Peterson

21

J. POKORNY

336-537  
13.92 A

523-89  
7.96 A

565-124  
2 A

116 A

67.19 A

W. C. Peterson

21

J. POKORNY

336-537  
13.92 A

523-89  
7.96 A

565-124  
2 A

116 A

67.19 A

W. C. Peterson

21

J. POKORNY

336-537  
13.92 A

523-89  
7.96 A

565-124  
2 A

116 A

67.19 A

W. C. Peterson

21

J. POKORNY

336-537  
13.92 A

523-89  
7.96 A

565-124  
2 A

116 A

67.19 A

W. C. Peterson

21

J. POKORNY

336-537  
13.92 A

523-89  
7.96 A

565-124  
2 A

N

SCALE 1" = 300'

A	B	C	D
E	F	G	H
I	J	K	L
M	N	O	P

HAMB DEN TWP.  
JAN 1975

CLARIDON TOWNSHIP

GEORGIANN FARINACCI

D. & G. FARINACCI

S. Woodin

H. Woodin

R.L. & G.I. CAUSO

J. & M. HESS

49.91 A

59.97 A

143-580

68.19 A

334-537  
13.92 A

523-89  
7.96 A

565-124  
2 A

60 A

W. C. Peterson

21

J. POKORNY

336-537  
13.92 A

523-89  
7.96 A

565-124  
2 A

116 A

67.19 A

W. C. Peterson

21

J. POKORNY

336-537  
13.92 A

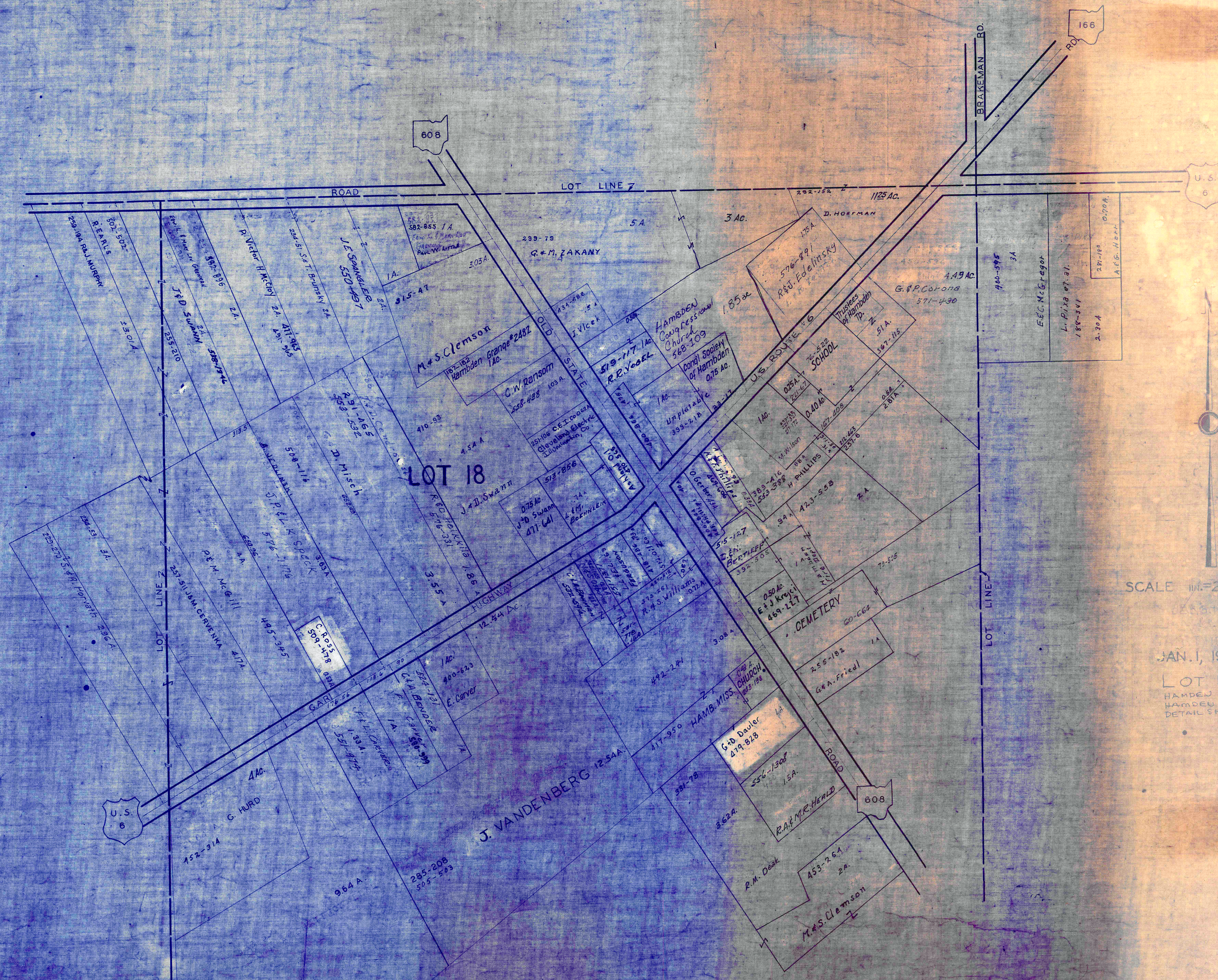




HAMB DEN CENTER AND VICINITY

HAMB DEN TP.

HAMB DEN CENTER AND VICINITY



SCALE 1 in. = 25 ch. or 160 ft.

JAN. 1, 1975

LOT 18  
HAMB DEN TWP.  
HAMB DEN CENTER  
DETAIL SHEET 9 OF 12